

1. General Description

The EXS0104 is a 4-bit, dual supply translating transceiver with auto direction sensing, that enables bidirectional voltage level translation. It features two 4-bit input-output ports (An and Bn), one output enable input (OE) and two supply pins ($V_{CC(A)}$ and $V_{CC(B)}$). $V_{CC(A)}$ can be supplied at any voltage between 1.3 V and 5.5 V and $V_{CC(B)}$ can be supplied at any voltage between 1.65 V and 5.5 V, making the device suitable for translating between any of the voltage nodes (1.8 V, 2.5 V, 3.3 V and 5.0 V). Pins An and OE are referenced to $V_{CC(A)}$ and pins Bn are referenced to $V_{CC(B)}$. A LOW level at pin OE causes the outputs to assume a high-impedance OFF-state. This device is fully specified for partial power-down applications using I_{OFF} . The I_{OFF} circuitry disables the output, preventing the damaging backflow current through the device when it is powered down.

2. Features and Benefits

- Wide supply voltage range:
 - $V_{CC(A)}$: 1.3 V to 5.5 V and $V_{CC(B)}$: 1.65 V to 5.5 V
- Maximum data rates:
 - Push-pull: 40 Mbps
 - Open-drain: 2 Mbps
- I_{OFF} circuitry provides partial Power-down mode operation
- Inputs accept voltages up to 5.5 V
- No power-supply sequencing required – V_{CCA} or V_{CCB} can be ramped first
- Latch-up performance exceeds 100 mA per JESD 78B Class II
- ESD protection:
 - HBM: ANSI/ESDA/JEDEC JS-001 class 2 exceeds 2500 V
 - CDM: ANSI/ESDA/JEDEC JS-002 class C3 exceeds 1000 V
- Multiple package options
- Specified from -40 °C to +85 °C and -40 °C to +125 °C

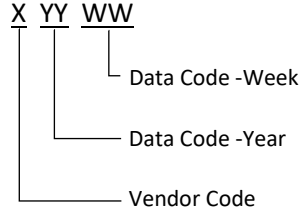
3. Ordering Information

Table 1. Ordering information

Type number	Topside marking	Package		
		Name	Description	Quantity
EXS0104D	S0104 XYYWW	SOP-14L	plastic small outline package; 14 leads; body width 3.9 mm	3000
EXS0104PW	S0104 XYYWW	TSSOP-14L	plastic thin shrink small outline package; 14 leads; body width 4.4 mm	3000
EXS0104RGY	S0104 XYYWW	QFN3.5x3.5-14L	plastic quad flat no-lead package; 14 terminals; body 3.5 × 3.5 × 0.8 mm	3000
EXS0104RSA	S0104 XYYWW	QFN1.7x2-12L	plastic quad flat no-lead package; 12 terminals; body 1.7 × 2 × 0.5 mm	3000

MARKING INFORMATION

NOTE: XYYWW = Vendor Code and Data Code.



4. Function Diagram

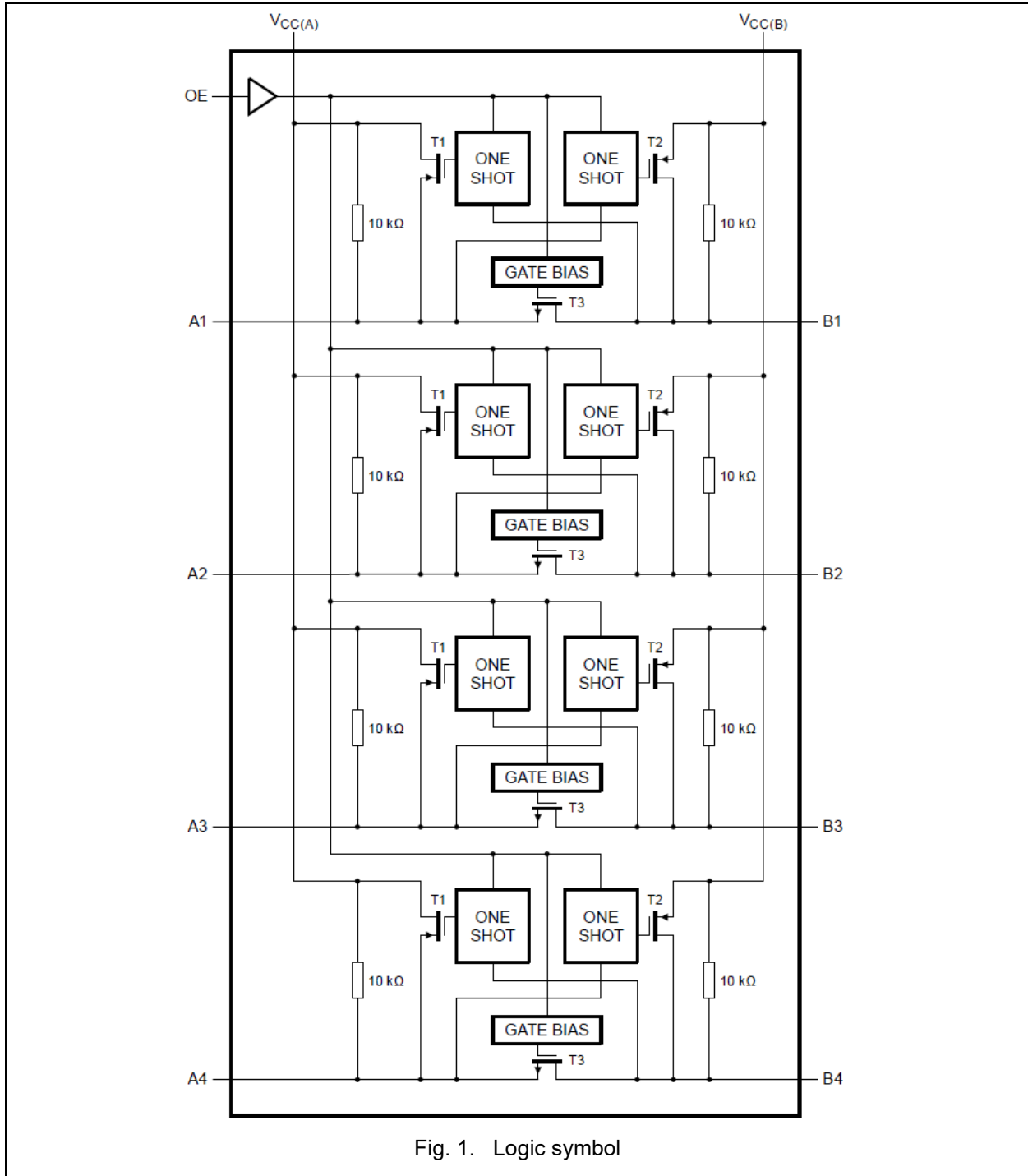
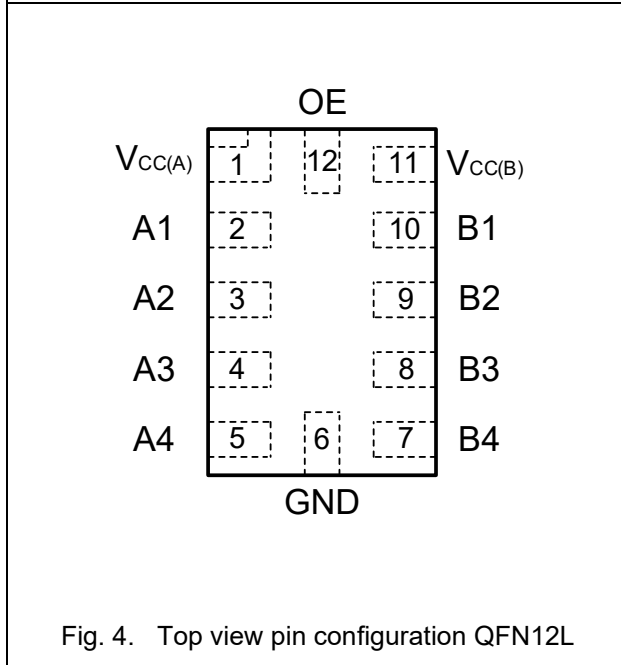
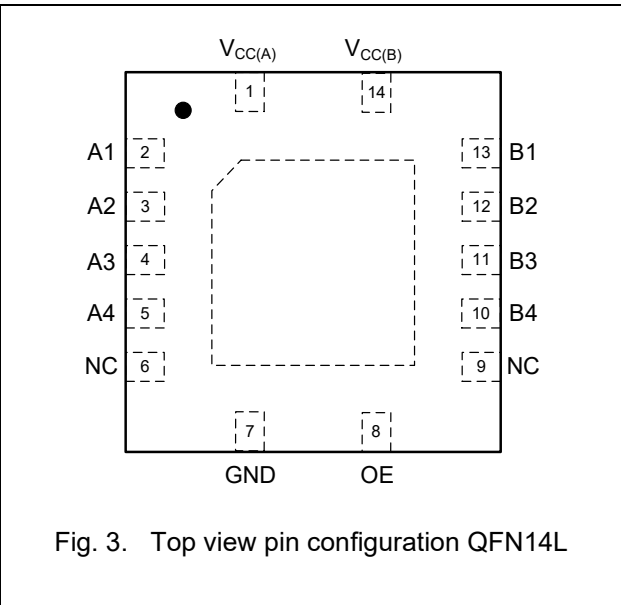
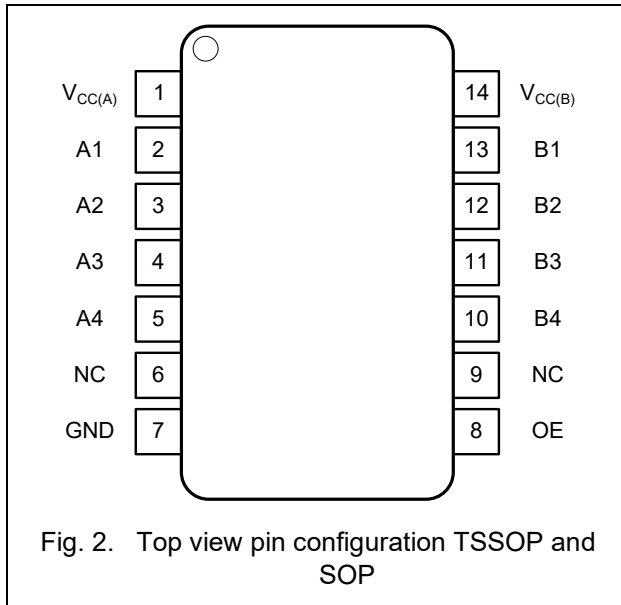


Fig. 1. Logic symbol

5. Pinning Information

5.1. Pinning



EXS0104

Dual supply translating transceiver; open drain; auto direction sensing

5.2. Pin description

Table 2. Pin description

Symbol	Pin		Description
	SOP, TSSOP, and QFN14L	QFN12L	
V _{CC(A)}	1	1	supply voltage A
A1, A2, A3, A4	2, 3, 4, 5	2, 3, 4, 5	data input or output (referenced to V _{CC(A)})
NC	6, 9		not connected
GND	7	6	ground (0V)
OE	8	12	output enable input (active HIGH; referenced to V _{CC(A)})
B4, B3, B2, B1	10, 11, 12, 13	7, 8, 9, 10	data input or output (referenced to V _{CC(B)})
V _{CC(B)}	14	11	supply voltage B

6. Functional Description

Table 3. Function table

H = HIGH voltage level; L = LOW voltage level; X = don't care; Z = high-impedance OFF-state

Supply voltage		Input	Input/output	
V _{CC(A)} [1]	V _{CC(B)}	OE	A _n	B _n
1.3 V to 5.5 V	1.65 V to 5.5 V	L	Z	Z
1.3 V to 5.5 V	1.65 V to 5.5 V	H	input or output	output or input
GND [2]	GND [2]	X	Z	Z

[1] V_{CC(A)} must be less than or equal to V_{CC(B)}.

[2] When either V_{CC(A)} or V_{CC(B)} is at GND level, the device goes into power-down mode.

7. Absolute Maximum Ratings

Stresses exceeding the absolute maximum ratings may damage the device. The device may not function or be operable above the recommended operating conditions and stressing the parts to these levels is not recommended. In addition, extended exposure to stresses above the recommended operating conditions may affect device reliability. The absolute maximum ratings are stress ratings only.

Table 4. Absolute Maximum Ratings

In accordance with the Absolute Maximum Rating System (IEC 60134). Voltages are referenced to GND.

Symbol	Parameter	Conditions	Min	Max	Unit
$V_{CC(A)}$	supply voltage A		-0.5	6.5	V
$V_{CC(B)}$	supply voltage B		-0.5	6.5	V
V_I	input voltage	OE [1]	-0.5	6.5	V
		An, Bn; Power-down or 3-state mode [1]	-0.5	6.5	V
		An, Bn; Active mode [1] [2] [3]	-0.5	$V_{CCI}+0.5$	V
V_O	output voltage	An, Bn; Power-down or 3-state mode [1]	-0.5	6.5	V
		An, Bn; Active mode [1] [3] [4]	-0.5	$V_{CCO}+0.5$	V
I_{IK}	input clamping current	$V_I < 0$ V	-50		mA
I_{OK}	output clamping current	$V_O < 0$ V	-50		mA
I_O	output current	$V_O = 0$ V to V_{CCO} [2]		± 50	mA
I_{CC}	supply current	$I_{CC(A)}$ or $I_{CC(B)}$		100	mA
I_{GND}	ground current		-100		mA
P_{tot}	total power dissipation	$T_{amb} = -40$ °C to $+125$ °C		250	mW
T_{stg}	storage temperature		-65	150	°C

[1] The input and output voltage ratings may be exceeded if the input and output current ratings are observed.

[2] V_{CCI} is the supply voltage associated with the input.

[3] $V_{CCI} + 0.5$ V or $V_{CCO} + 0.5$ V should not exceed 6.5 V.

[4] V_{CCO} is the supply voltage associated with the output.

8. Recommended Operating Conditions

The Recommended Operating Conditions table defines the conditions for actual device operation. Recommended operating conditions are specified to ensure optimal performance to the datasheet specifications. EnergyMath does not recommend exceeding them or designing to Absolute Maximum Ratings.

Table 5. Recommended Operating Conditions[1] [2]

Symbol	Parameter	Conditions	Min	Max	Unit
V _{CC(A)}	supply voltage A		1.3	5.5	V
V _{CC(B)}	supply voltage B		1.65	5.5	V
V _i	input voltage	OE	0	5.5	V
		Power-down or 3-state mode			
		An	0	5.5	V
		Bn	0	5.5	V
		Active mode			
		An, Bn [3]	0	V _{CCI}	V
V _o	output voltage	Power-down or 3-state mode			
		An	0	5.5	V
		Bn	0	5.5	V
		Active mode			
		An, Bn [4]	0	V _{CCO}	V
T _{amb}	ambient temperature		-40	125	°C
Δt/ΔV	input transition rise and fall rate	A or B port; push-pull driving			
		V _{CC(A)} = 1.3 V to 5.5 V; V _{CC(B)} = 1.65 V to 5.5 V		10	ns/V
		OE input			
		V _{CC(A)} = 1.3 V to 5.5 V; V _{CC(B)} = 1.65 V to 5.5 V		10	ns/V

[1] The A and B sides of an unused I/O pair must be held in the same state, both at V_{CCI} or both at GND.

[2] V_{CC(A)} must be less than or equal to V_{CC(B)}.

[3] V_{CCI} is the supply voltage associated with the input.

[4] V_{CCO} is the supply voltage associated with the output.

9. Static Characteristics

Table 6. Typical supply current

At recommended operating conditions; voltages are referenced to GND (ground = 0 V); $T_{amb} = 25\text{ }^{\circ}\text{C}$.

$V_{CC(A)}$	$V_{CC(B)}$								Unit
	1.8 V		2.5 V		3.3 V		5.0 V		
	$I_{CC(A)}$	$I_{CC(B)}$	$I_{CC(A)}$	$I_{CC(B)}$	$I_{CC(A)}$	$I_{CC(B)}$	$I_{CC(A)}$	$I_{CC(B)}$	
1.3 V	0.03	0.001	0.08	0.01	0.15	0.07	0.26	0.35	μA
1.5 V	0.03	0.001	0.08	0.004	0.16	0.05	0.30	0.30	μA
1.8 V	0.03	0.001	0.08	0.001	0.16	0.03	0.33	0.25	μA
2.5 V			0.07	0.001	0.16	0.001	0.40	0.13	μA
3.3 V					0.16	0.001	0.42	0.05	μA
5.0 V							0.43	0.01	μA

Table 7. Static characteristics

At recommended operating conditions. Voltages are referenced to GND (ground = 0 V). All typical values are measured at $T_{amb} = 25\text{ }^{\circ}\text{C}$. [1]

Symbol	Parameter	Conditions	$-40\text{ }^{\circ}\text{C}$ to $+85\text{ }^{\circ}\text{C}$			$-40\text{ }^{\circ}\text{C}$ to $+125\text{ }^{\circ}\text{C}$		Unit
			Min	Typ	Max	Min	Max	
V_{IH}	HIGH-level input voltage	A port						
		$V_{CC(A)} = 1.3\text{ V to }1.95\text{ V};$ $V_{CC(B)} = 1.65\text{ V to }5.5\text{ V}$	$V_{CC(A)} - 0.2$		$V_{CC(A)}$	$V_{CC(A)} - 0.2$	$V_{CC(A)}$	V
		$V_{CC(A)} = 2.3\text{ V to }5.5\text{ V};$ $V_{CC(B)} = 2.3\text{ V to }5.5\text{ V}$	$V_{CC(A)} - 0.4$		$V_{CC(A)}$	$V_{CC(A)} - 0.4$	$V_{CC(A)}$	V
		B port						
		$V_{CC(A)} = 1.3\text{ V to }5.5\text{ V};$ $V_{CC(B)} = 1.65\text{ V to }5.5\text{ V}$	$V_{CC(B)} - 0.4$		$V_{CC(B)}$	$V_{CC(B)} - 0.4$	$V_{CC(B)}$	V
		OE input						
		$V_{CC(A)} = 1.3\text{ V to }5.5\text{ V};$ $V_{CC(B)} = 1.65\text{ V to }5.5\text{ V}$	$0.65V_{CC(A)}$		$V_{CC(A)}$	$0.65V_{CC(A)}$	$V_{CC(A)}$	V
V_{IL}	LOW-level input voltage	A or B port						
		$V_{CC(A)} = 1.3\text{ V to }5.5\text{ V};$ $V_{CC(B)} = 1.65\text{ V to }5.5\text{ V}$	0		0.15	0	0.15	V
		OE input						
		$V_{CC(A)} = 1.3\text{ V to }5.5\text{ V};$ $V_{CC(B)} = 1.65\text{ V to }5.5\text{ V}$	0		$0.35V_{CC(A)}$	0	$0.35V_{CC(A)}$	V
V_{OH}	HIGH-level output voltage	A port; $I_O = -20\text{ }\mu\text{A}; V_I \geq$ $V_{CC(B)} - 0.4\text{ V}$						
		$V_{CC(A)} = 1.3\text{ V to }5.5\text{ V};$ $V_{CC(B)} = 1.65\text{ V to }5.5\text{ V}$	$0.67V_{CC(A)}$			$0.67V_{CC(A)}$		V
		B port; $I_O = -20\text{ }\mu\text{A}; V_I \geq$ $V_{CC(A)} - 0.2\text{ V}$						
		$V_{CC(A)} = 1.3\text{ V to }5.5\text{ V};$ $V_{CC(B)} = 1.65\text{ V to }5.5\text{ V}$	$0.67V_{CC(B)}$			$0.67V_{CC(B)}$		V

EXS0104
Dual supply translating transceiver; open drain; auto direction sensing

Symbol	Parameter	Conditions	-40 °C to +85 °C			-40 °C to +125 °C		Unit
			Min	Typ	Max	Min	Max	
V _{OL}	LOW-level output voltage	A or B port; IO = 1 mA; VI ≤ 0.15 V						
		V _{CC(A)} = 1.3 V to 5.5 V; V _{CC(B)} = 1.65 V to 5.5 V			0.4		0.4	V
I _{oz}	OFF-state output current	A or B port; V _{CC(A)} = 1.3 V to 5.5 V; V _{CC(B)} = 1.65V to 5.5 V			±4		±20	µA
I _I	input leakage current	OE input; V _{CC(A)} = 1.3 V to 5.5 V; V _{CC(B)} = 1.65V to 5.5 V			±4		±20	µA
I _{OFF}	power-off leakage current	A port; V _I or V _O = 0 V to 5.5 V; V _{CC(A)} = 0 V; V _{CC(B)} = 0 V to 5.5 V			±4		±20	µA
		B port; V _I or V _O = 0 V to 5.5 V; V _{CC(B)} = 0 V; V _{CC(A)} = 0 V to 5.5 V			±4		±20	µA
I _{CC}	supply current	OE = 0 V or V _{CC(A)} ; An, Bn open						
		I _{CC(A)}						
		V _{CC(A)} = 1.3 V to 5.5 V; V _{CC(B)} = 1.65 V to 5.5 V			12		54	µA
		V _{CC(A)} = 5.5 V; V _{CC(B)} = 0 V			3.7		19	µA
		V _{CC(A)} = 0 V; V _{CC(B)} = 5.5 V			-1		-1	µA
		I _{CC(B)}						
		V _{CC(A)} = 1.3 V to 5.5 V; V _{CC(B)} = 1.65 V to 5.5 V			11		53	µA
		V _{CC(A)} = 5.5 V; V _{CC(B)} = 0 V			-1		-1	µA
		V _{CC(A)} = 0 V; V _{CC(B)} = 5.5 V			3.7		19	µA
		I _{CC(A)} + I _{CC(B)}						
		V _{CC(A)} = 1.3 V to 5.5 V; V _{CC(B)} = 1.65 V to 5.5 V			21		105	µA
C _I	input capacitance	OE input; V _{CC(A)} = 3.3 V; V _{CC(B)} = 3.3 V		4				pF
C _{I/O}	input/output capacitance	A port; V _{CC(A)} = 3.3 V; V _{CC(B)} = 3.3 V						
		enabled		7				pF
	disabled			3.1				pF

EXS0104

Dual supply translating transceiver; open drain; auto direction sensing

Symbol	Parameter	Conditions	-40 °C to +85 °C			-40 °C to +125 °C		Unit
			Min	Typ	Max	Min	Max	
		B port; $V_{CC(A)} = 3.3 \text{ V}$; $V_{CC(B)} = 3.3 \text{ V}$						
		enabled		7				pF
		disabled		3.1				pF

[1] $V_{CC(A)}$ must be less than or equal to $V_{CC(B)}$.

10. Dynamic Characteristics

Table 8. Dynamic characteristics

Voltages are referenced to GND (ground = 0 V); for test circuit see Fig. 8.

Symbol	Parameter	Conditions	$V_{CC(B)}$				Unit
			$1.8 \pm 0.15 \text{ V}$	$2.5 \text{ V} \pm 0.2 \text{ V}$	$3.3 \text{ V} \pm 0.3 \text{ V}$	$5.0 \text{ V} \pm 0.5 \text{ V}$	
			Typ	Typ	Typ	Typ	
$V_{CC(A)} = 1.3 \text{ V}$; $T_{amb} = 25^\circ\text{C}$							
t_{PHL}	HIGH to LOW propagation delay	A to B	4.9	6.5	7.8	9.5	ns
t_{PLH}	LOW to HIGH propagation delay	A to B	8.6	6.9	6.2	6.0	ns
t_{PHL}	HIGH to LOW propagation delay	B to A	4.5	5.6	6.5	8.7	ns
t_{PLH}	LOW to HIGH propagation delay	B to A	5.8	5.1	4.9	4.8	ns
t_{en}	enable time	OE to A, B ; see Fig. 6 [1]	82	82	82	82	ns
t_{dis}	disable time	OE to A; see Fig.7 [1]	190	190	190	190	ns
		OE to B see Fig.7 [1]	174	137	182	131	ns
t_{TLH}	LOW to HIGH output transition time	A port	7.4	6.7	6.7	6.5	ns
		B port	10.2	8.2	6.6	6.5	ns
t_{THL}	HIGH to LOW output transition time	A port	7.3	7.3	7.6	7.6	ns
		B port	9.3	12.8	11.2	17.1	ns
$t_{sk(O)}$	output skew time	between channels [2]	0.7	0.7	0.7	0.7	ns

EXS0104
Dual supply translating transceiver; open drain; auto direction sensing

Symbol	Parameter	Conditions	V _{CC(B)}				Unit
			1.8±0.15 V	2.5 V ± 0.2 V	3.3 V ± 0.3 V	5.0 V ± 0.5 V	
			Typ	Typ	Typ	Typ	
t _w	pulse width	data inputs	25	25	25	25	ns
f _{data}	data rate		40	40	40	40	Mbps

Table 9. Dynamic characteristics for temperature range -40 °C to +85 °C

Voltages are referenced to GND (ground = 0 V); for test circuit see Fig. 7.

Symbol	Parameter	Conditions	V _{CC(B)}								Unit
			1.8±0.15 V		2.5 V ± 0.2 V		3.3 V ± 0.3 V		5.0 V ± 0.5 V		
			Min	Max	Min	Max	Min	Max	Min	Max	
V_{CC(A)} = 1.5 V ± 0.1V											
t _{PHL}	HIGH to LOW propagation delay	A to B		6.0		7.0		8.6		10.5	ns
t _{PLH}	LOW to HIGH propagation delay	A to B		12.6		10.0		8.5		8.0	ns
t _{PHL}	HIGH to LOW propagation delay	B to A		5.1		5.5		5.9		6.5	ns
t _{PLH}	LOW to HIGH propagation delay	B to A		8.5		8.0		5.8		5.5	ns
t _{en}	enable time	OE to A, B ; see Fig. 6 [1]		120		120		120		120	ns
t _{dis}	disable time	OE to A; see Fig.7 [1]		230		230		230		230	ns
		OE to B see Fig.7 [1]		200		150		180		115	ns
t _{TLH}	LOW to HIGH output transition time	A port	2.5	10.6	2.1	9.5	1.9	9.1	1.9	8.9	ns
		B port	4.1	15.2	3.2	10.6	2.8	8.7	0.4	7.5	ns
t _{THL}	HIGH to LOW output transition time	A port	3.0	9.7	3.1	10.8	3.1	10.1	3.1	10.2	ns
		B port	3.0	11.7	3.6	15.7	4.2	14.2	5.5	21.4	ns
t _{sk(O)}	output skew time	between channels [2]				0.7		0.7		0.7	ns
t _w	pulse width	data inputs			25		25		25		ns
f _{data}	data rate				40		40		40		Mbps

EXS0104
Dual supply translating transceiver; open drain; auto direction sensing

Symbol	Parameter	Conditions	V _{CC(B)}								Unit
			1.8±0.15 V		2.5 V ± 0.2 V		3.3 V ± 0.3 V		5.0 V ± 0.5 V		
			Min	Max	Min	Max	Min	Max	Min	Max	
V_{CC(A)} = 1.8 V ± 0.15 V											
t _{PHL}	HIGH to LOW propagation delay	A to B		4.5		5.0		5.5		7.5	ns
t _{PLH}	LOW to HIGH propagation delay	A to B		11.3		8.4		6.4		6.1	ns
t _{PHL}	HIGH to LOW propagation delay	B to A		3.5		4.1		4.5		5.5	ns
t _{PLH}	LOW to HIGH propagation delay	B to A		6.5		6.0		5.0		4.6	ns
t _{en}	enable time	OE to A, B ; see Fig. 6 [1]		100		100		100		100	ns
t _{dis}	disable time	OE to A; see Fig.7 [1]		200		200		200		200	ns
		OE to B see Fig.7 [1]		200		150		180		115	ns
t _{TLH}	LOW to HIGH output transition time	A port	2.3	8.7	1.8	7.6	1.6	7.4	1.5	7.1	ns
		B port	3.9	14.2	3.1	9.8	2.7	7.7	2.3	6.8	ns
t _{THL}	HIGH to LOW output transition time	A port	2.7	9.2	2.7	9.3	2.7	9.7	2.9	9.8	ns
		B port	2.6	9.6	2.9	12.0	3.3	9.8	4.3	15.0	ns
t _{sk(O)}	output skew time	between channels [2]				0.7		0.7		0.7	ns
t _w	pulse width	data inputs			25		25		25		ns
f _{data}	data rate				40		40		40		Mbps
V_{CC(A)} = 2.5 V ± 0.2 V											
t _{PHL}	HIGH to LOW propagation delay	A to B				2.5		2.7		3.8	ns
t _{PLH}	LOW to HIGH propagation delay	A to B				5.7		5.0		5.2	ns
t _{PHL}	HIGH to LOW propagation delay	B to A				2.8		3.5		4.2	ns
t _{PLH}	LOW to HIGH propagation delay	B to A				1.8		1.6		1.5	ns

EXS0104
Dual supply translating transceiver; open drain; auto direction sensing

Symbol	Parameter	Conditions	V _{CC(B)}								Unit
			1.8±0.15 V		2.5 V ± 0.2 V		3.3 V ± 0.3 V		5.0 V ± 0.5 V		
			Min	Max	Min	Max	Min	Max	Min	Max	
t _{en}	enable time	OE to A, B ; see Fig. 6 [1]				80		80		80	ns
t _{dis}	disable time	OE to A; see Fig.7 [1]				150		150		150	ns
		OE to B see Fig.7 [1]				150		180		115	ns
t _{TLH}	LOW to HIGH output transition time	A port			1.7	6.3	1.4	5.9	1.3	5.7	ns
		B port			2.7	9.1	2.4	7.1	2.1	6.0-	ns
t _{THL}	HIGH to LOW output transition time	A port			2.4	9.9	2.5	10.1	2.5	10.3	ns
		B port			2.3	9.8	2.5	7.4	3.0	10.5	ns
t _{sk(O)}	output skew time	between channels [2]				0.7		0.7		0.7	ns
t _w	pulse width	data inputs			25		25		25		ns
f _{data}	data rate					40		40		40	Mbps
V_{CC(A)} = 3.3 V ± 0.3 V											
t _{PHL}	HIGH to LOW propagation delay	A to B						1.9		2.7	ns
t _{PLH}	LOW to HIGH propagation delay	A to B						3.0		3.5	ns
t _{PHL}	HIGH to LOW propagation delay	B to A						3.0		3.5	ns
t _{PLH}	LOW to HIGH propagation delay	B to A						1.9		1.7	ns
t _{en}	enable time	OE to A, B ; see Fig. 6 [1]						70		70	ns
t _{dis}	disable time	OE to A; see Fig.7 [1]						180		180	ns
		OE to B see Fig.7 [1]						180		115	ns
t _{TLH}	LOW to HIGH output transition time	A port					1.4	4.7	1.2	4.3	ns
		B port					2.2	6.6	2	5.8	ns
t _{THL}	HIGH to LOW output transition time	A port					2.3	7.3	2.3	7.9	ns
		B port					2.3	6.9	2.5	9.6	ns

EXS0104

Dual supply translating transceiver; open drain; auto direction sensing

Symbol	Parameter	Conditions	V _{CC(B)}								Unit
			1.8±0.15 V		2.5 V ± 0.2 V		3.3 V ± 0.3 V		5.0 V ± 0.5 V		
			Min	Max	Min	Max	Min	Max	Min	Max	
t _{sk(O)}	output skew time	between channels [2]						0.7		0.7	ns
t _w	pulse width	data inputs	25		25		25		25		ns
f _{data}	data rate			40		40		40		40	Mbps
V_{CC(A)} = 5.5 V ± 0.5 V											
t _{PHL}	HIGH to LOW propagation delay	A to B								1.8	ns
t _{PLH}	LOW to HIGH propagation delay	A to B								1.5	ns
t _{PHL}	HIGH to LOW propagation delay	B to A								2.5	ns
t _{PLH}	LOW to HIGH propagation delay	B to A								2.3	ns
t _{en}	enable time	OE to A, B ; see Fig. 6 [1]								60	ns
t _{dis}	disable time	OE to A; see Fig.7 [1]								115	ns
		OE to B see Fig.7 [1]								115	ns
t _{TLH}	LOW to HIGH output transition time	A port							1.4	6.0	ns
		B port							1.8	5.8	ns
t _{THL}	HIGH to LOW output transition time	A port							2.2	9.4	ns
		B port							2.2	9.2	ns
t _{sk(O)}	output skew time	between channels [2]						0.7		0.7	ns
t _w	pulse width	data inputs	25		25		25		25		ns
f _{data}	data rate			40		40		40		40	Mbps

[1] t_{en} is the same as t_{pZL} and t_{pZH}; t_{dis} is the same as t_{pLZ} and t_{pHZ}.

[2] Skew between any two outputs of the same package switching in the same direction.

EXS0104

Dual supply translating transceiver; open drain; auto direction sensing

Table 10. Dynamic characteristics for temperature range -40 °C to +125 °C

Voltages are referenced to GND (ground = 0 V); for test circuit see Fig. 7.

Symbol	Parameter	Conditions	V _{CC(B)}								Unit
			1.8±0.15 V		2.5 V ± 0.2 V		3.3 V ± 0.3 V		5.0 V ± 0.5 V		
			Min	Max	Min	Max	Min	Max	Min	Max	
V_{CC(A)} = 1.5 V ± 0.1V											
t _{PHL}	HIGH to LOW propagation delay	A to B		6.0		7.0		8.6		10.5	ns
t _{PLH}	LOW to HIGH propagation delay	A to B		12.6		10.5		9.2		8.5	ns
t _{PHL}	HIGH to LOW propagation delay	B to A		5.1		5.5		5.9		6.5	ns
t _{PLH}	LOW to HIGH propagation delay	B to A		8.5		8.0		5.8		5.5	ns
t _{en}	enable time	OE to A, B ; see Fig. 6 [1]		120		120		120		120	ns
t _{dis}	disable time	OE to A; see Fig.7 [1]		230		230		230		230	ns
		OE to B see Fig.7 [1]		200		150		180		115	ns
t _{TLH}	LOW to HIGH output transition time	A port	2.5	10.8	2.1	9.6	1.9	9.3	1.9	9.9	ns
		B port	4.1	15.3	3.2	10.9	2.8	8.9	0.4	7.7	ns
t _{THL}	HIGH to LOW output transition time	A port	3.0	9.7	3.1	10.8	3.1	10.1	3.1	10.2	ns
		B port	3.0	11.7	3.6	15.7	4.2	14.2	5.5	21.4	ns
t _{sk(O)}	output skew time	between channels [2]				0.8		0.8		0.8	ns
t _w	pulse width	data inputs			25		25		25		ns
f _{data}	data rate					40		40		40	Mbps
V_{CC(A)} = 1.8 V ± 0.15 V											
t _{PHL}	HIGH to LOW propagation delay	A to B		4.5		5.0		5.5		7.5	ns
t _{PLH}	LOW to HIGH propagation delay	A to B		11.3		9.0		7.1		6.7	ns
t _{PHL}	HIGH to LOW propagation delay	B to A		3.5		4.1		4.5		5.5	ns

EXS0104
Dual supply translating transceiver; open drain; auto direction sensing

Symbol	Parameter	Conditions	V _{CC(B)}								Unit
			1.8±0.15 V		2.5 V ± 0.2 V		3.3 V ± 0.3 V		5.0 V ± 0.5 V		
			Min	Max	Min	Max	Min	Max	Min	Max	
t _{PLH}	LOW to HIGH propagation delay	B to A		6.5		6.0		5.0		4.6	ns
t _{en}	enable time	OE to A, B ; see Fig. 6 [1]		100		100		100		100	ns
t _{dis}	disable time	OE to A; see Fig.7 [1]		200		200		200		200	ns
		OE to B see Fig.7 [1]		200		150		180		115	ns
t _{TLH}	LOW to HIGH output transition time	A port	2.3	8.9	1.8	7.8	1.6	7.6	1.5	7.3	ns
		B port	3.9	14.3	3.1	10.1	2.7	7.9	2.3	7.4	ns
t _{THL}	HIGH to LOW output transition time	A port	2.7	9.2	2.7	9.3	2.7	9.7	2.9	9.8	ns
		B port	2.6	9.6	2.9	12.0	3.3	9.8	4.3	15.0	ns
t _{sk(O)}	output skew time	between channels [2]				0.8		0.8		0.8	ns
t _w	pulse width	data inputs			25		25		25		ns
f _{data}	data rate					40		40		40	Mbps
V_{CC(A)} = 2.5 V ± 0.2 V											
t _{PHL}	HIGH to LOW propagation delay	A to B				2.7		2.9		4.1	ns
t _{PLH}	LOW to HIGH propagation delay	A to B				5.7		5.5		5.8	ns
t _{PHL}	HIGH to LOW propagation delay	B to A				2.8		4.0		5.3	ns
t _{PLH}	LOW to HIGH propagation delay	B to A				1.8		1.6		1.7	ns
t _{en}	enable time	OE to A, B ; see Fig. 6 [1]				80		80		80	ns
t _{dis}	disable time	OE to A; see Fig.7 [1]				150		150		150	ns
		OE to B see Fig.7 [1]				150		180		115	ns
t _{TLH}	LOW to HIGH output transition time	A port			1.7	6.5	1.4	6.1	1.3	5.8	ns
		B port			2.7	9.3	2.4	7.3	2.1	6.2	ns

EXS0104
Dual supply translating transceiver; open drain; auto direction sensing

Symbol	Parameter	Conditions	V _{CC(B)}								Unit
			1.8±0.15 V		2.5 V ± 0.2 V		3.3 V ± 0.3 V		5.0 V ± 0.5 V		
			Min	Max	Min	Max	Min	Max	Min	Max	
t _{THL}	HIGH to LOW output transition time	A port			2.4	9.9	2.5	10.1	2.5	10.3	ns
		B port			2.3	9.8	2.5	7.4	3.0	10.5	ns
t _{sk(O)}	output skew time	between channels [2]				0.8		0.8		0.8	ns
t _w	pulse width	data inputs			25		25		25		ns
f _{data}	data rate				40		40		40		Mbps
V_{CC(A)} = 3.3 V ± 0.3 V											
t _{PHL}	HIGH to LOW propagation delay	A to B						2.1		3.0	ns
t _{PLH}	LOW to HIGH propagation delay	A to B						3.0		4.0	ns
t _{PHL}	HIGH to LOW propagation delay	B to A						3.5		4.0	ns
t _{PLH}	LOW to HIGH propagation delay	B to A						1.9		1.7	ns
t _{en}	enable time	OE to A, B ; see Fig. 6 [1]						70		70	ns
t _{dis}	disable time	OE to A; see Fig.7 [1]						180		180	ns
		OE to B see Fig.7 [1]						180		115	ns
t _{TLH}	LOW to HIGH output transition time	A port					1.4	4.8	1.2	4.4	ns
		B port					2.2	6.9	2	6.1	ns
t _{THL}	HIGH to LOW output transition time	A port					2.3	7.3	2.3	7.9	ns
		B port					2.3	6.9	2.5	9.6	ns
t _{sk(O)}	output skew time	between channels [2]						0.8		0.8	ns
t _w	pulse width	data inputs	25		25		25		25		ns
f _{data}	data rate			40		40		40		40	Mbps
V_{CC(A)} = 5.5 V ± 0.5 V											
t _{PHL}	HIGH to LOW propagation delay	A to B								1.9	ns

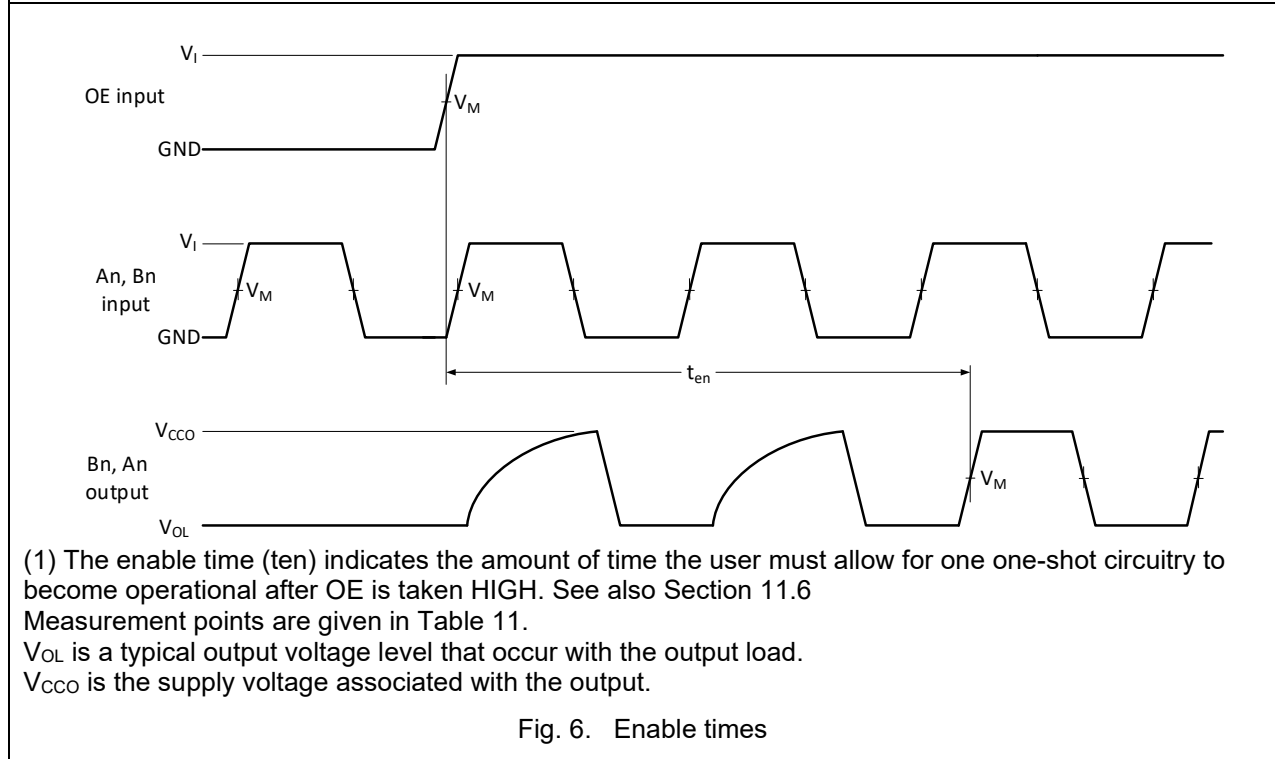
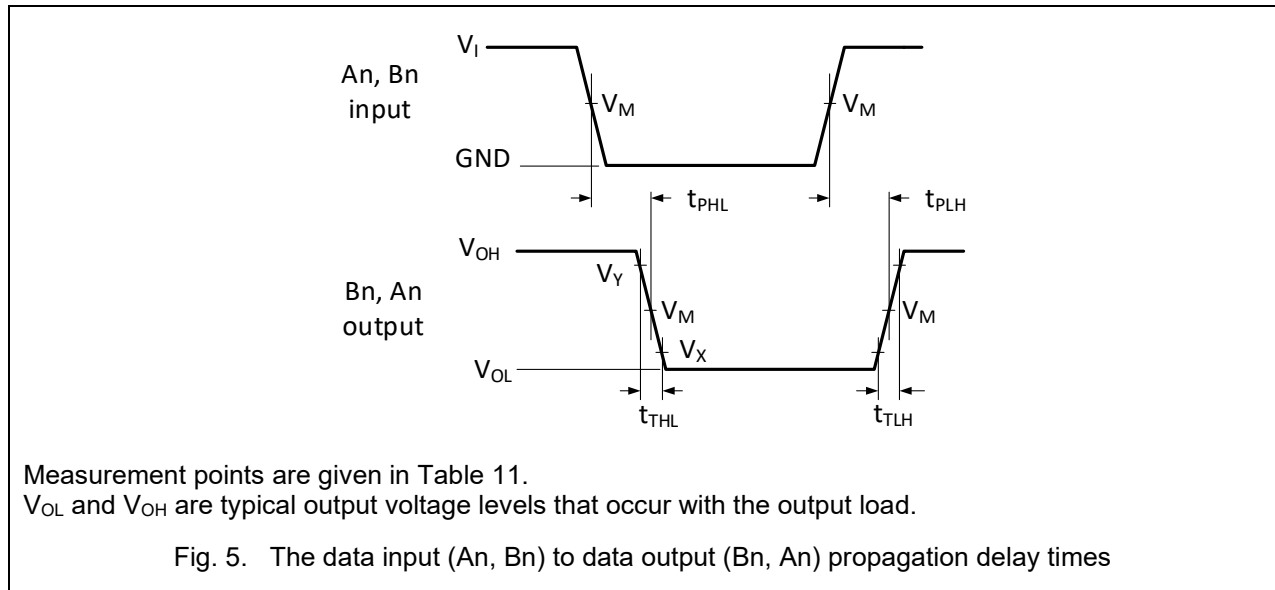
EXS0104
Dual supply translating transceiver; open drain; auto direction sensing

Symbol	Parameter	Conditions	V _{CC(B)}								Unit
			1.8±0.15 V		2.5 V ± 0.2 V		3.3 V ± 0.3 V		5.0 V ± 0.5 V		
			Min	Max	Min	Max	Min	Max	Min	Max	
t _{PLH}	LOW to HIGH propagation delay	A to B								1.8	ns
t _{PHL}	HIGH to LOW propagation delay	B to A								3.0	ns
t _{PLH}	LOW to HIGH propagation delay	B to A								2.3	ns
t _{en}	enable time	OE to A, B ; see Fig. 6 [1]								60	ns
t _{dis}	disable time	OE to A; see Fig.7 [1]								115	ns
		OE to B see Fig.7 [1]								115	ns
t _{TLH}	LOW to HIGH output transition time	A port							1.4	6.5	ns
		B port							1.8	6.2	ns
t _{THL}	HIGH to LOW output transition time	A port							2.2	9.5	ns
		B port							2.2	9.3	ns
t _{sk(O)}	output skew time	between channels [2]								0.8	ns
t _w	pulse width	data inputs	25		25		25		25		ns
f _{data}	data rate			40		40		40		40	Mbps

[1] t_{en} is the same as t_{pZL} and t_{pZH}; t_{dis} is the same as t_{pLZ} and t_{pHZ}.

[2] Skew between any two outputs of the same package switching in the same direction.

10.1. Waveforms and test circuit



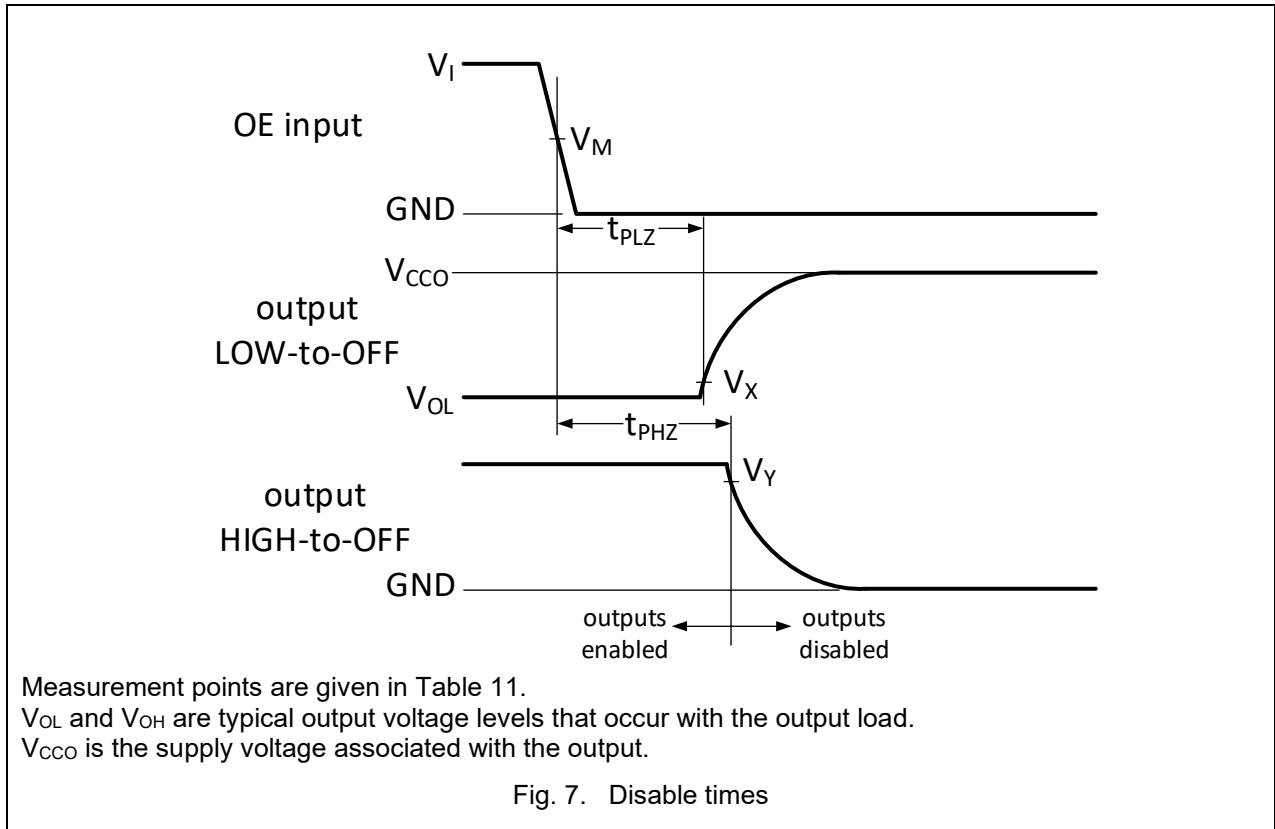


Table 11. Measurement points

Supply Voltage	Input	Output		
V_{CC0}	V_M	V_M	V_X	V_Y
1.5 V ± 0.1 V	$0.5V_{CC1}$	$0.5V_{CC0}$	$V_{OL} + 0.15 V$	$V_{OH} - 0.15 V$
1.8 V ± 0.15 V	$0.5V_{CC1}$	$0.5V_{CC0}$	$V_{OL} + 0.15 V$	$V_{OH} - 0.15 V$
2.5 V ± 0.2 V	$0.5V_{CC1}$	$0.5V_{CC0}$	$V_{OL} + 0.15 V$	$V_{OH} - 0.15 V$
3.3 V ± 0.3 V	$0.5V_{CC1}$	$0.5V_{CC0}$	$V_{OL} + 0.3 V$	$V_{OH} - 0.3 V$
5.0 V ± 0.5 V	$0.5V_{CC1}$	$0.5V_{CC0}$	$V_{OL} + 0.3 V$	$V_{OH} - 0.3 V$

[1] V_{CC1} is the supply voltage associated with the input.

[2] V_{CC0} is the supply voltage associated with the output.

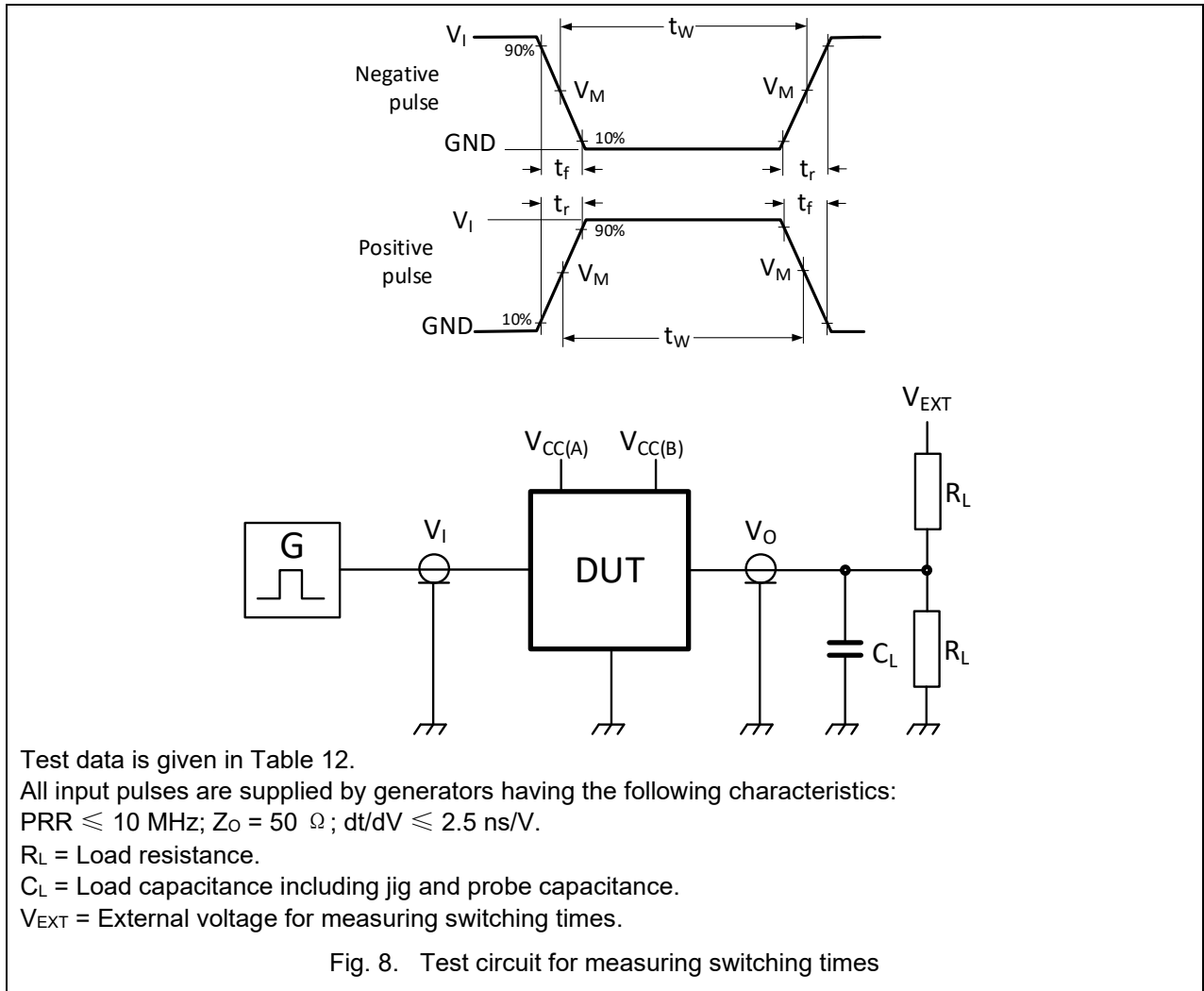


Table 12. Test data

Supply voltage		Input		Load		V_{EXT}		
$V_{CC(A)}$	$V_{CC(B)}$	V_i [1]	$\Delta t/\Delta V$	C_L	R_L [2]	t_{PLH} , t_{PHL}	t_{PZH} , t_{PHZ}	t_{PZL} , t_{PLZ}
1.3 V to 5.5 V	1.65 V to 5.5 V	V_{CCI}	$\leq 2.5 \text{ ns/V}$	15 pF	50 k Ω , 1M Ω	open	open	$2V_{CCO}$

[1] V_{CCI} is the supply voltage associated with the input.

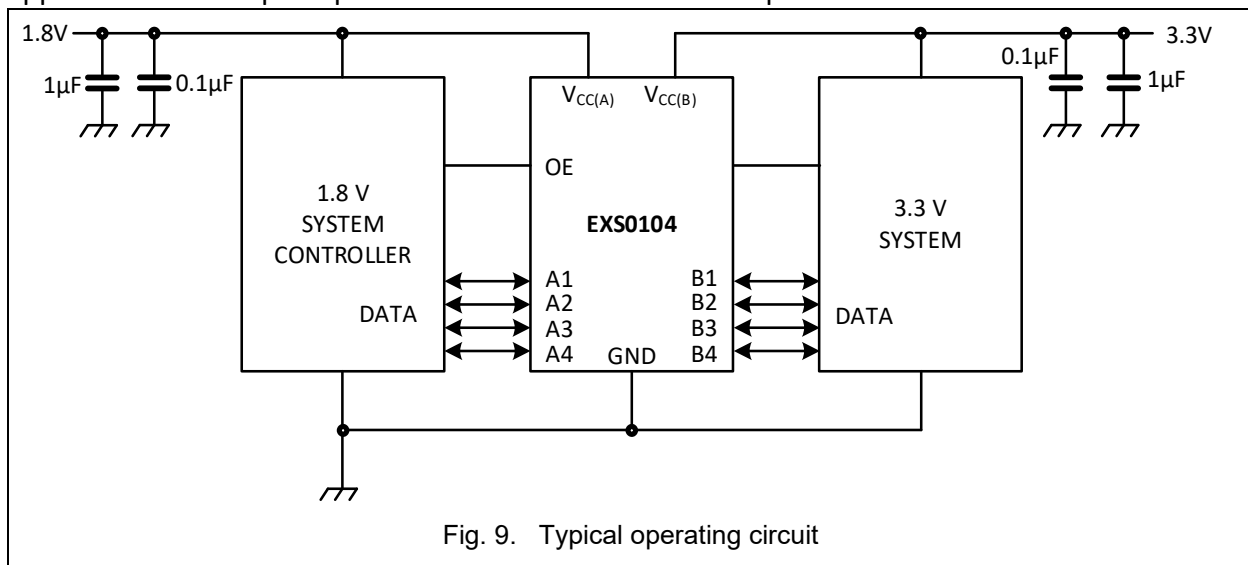
[2] For measuring data rate, pulse width, propagation delay and output rise and fall measurements, $R_L = 1 \text{ M}\Omega$. For measuring enable and disable times, $R_L = 50 \text{ k}\Omega$.

[3] V_{CCO} is the supply voltage associated with the output.

11. Application information

11.1. Applications

Voltage level-translation applications. The EXS0104 can be used in point-to-point applications to interface between devices or systems operating at different supply voltages. The device is primarily targeted at I²C or 1-wire which use open-drain drivers, it may also be used in applications where push-pull drivers are connected to the ports.



11.2. Architecture

The architecture of the EXS0104 is shown in Fig. 1. The device does not require an extra input signal to control the direction of data flow from A to B or B to A.

The EXS0104 is a "switch" type voltage translator, it employs two key circuits to enable voltage translation:

1. A pass-gate transistor (N-channel) that ties the ports together.
2. An output edge-rate accelerator that detects and accelerates rising edges on the I/O pins.

The gate bias voltage of the pass gate transistor (T3) is set at approximately one threshold voltage above the V_{CC} level of the low-voltage side. During a LOW-to-HIGH transition the output one-shot accelerates the output transition by switching on the PMOS transistors (T1, T2) bypassing the 10 k Ω pull-up resistors and increasing current drive capability. The one-shot is activated once the input transition reaches approximately $0.5V_{CC1}$. During the acceleration time the driver output resistance is between approximately 50 Ω and 70 Ω .

To avoid signal contention and minimize dynamic I_{CC} , the user should wait for the one-shot circuit to turn-off before applying a signal in the opposite direction. Pull-up resistors are included in the device for DC current sourcing capability.

11.3. Input driver requirements

As the EXS0104 is a switch type translator, properties of the input driver directly effect the output signal. The external open-drain or push-pull driver applied to an I/O determines the static current sinking capability of the system; the max data rate, HIGH-to-LOW output transition time (t_{THL}) and propagation delay (t_{PHL}) are dependent upon the output impedance and edge-rate of the external driver. The limits provided for these parameters in the datasheet assume a driver with output impedance below 50 Ω is used.

11.4. Output load considerations

The maximum lumped capacitive load that can be driven is dependant upon the one-shot pulse duration. In cases with very heavy capacitive loading there is a risk that the output will not reach the positive rail within the one-shot pulse duration. To avoid excessive capacitive loading and to ensure correct triggering of the one-shot it's recommended to use short trace lengths and low capacitance connectors on EXS0104 PCB layouts. To ensure low impedance termination and avoid output signal oscillations and one-shot re-triggering, the length of the PCB trace should be such that the round trip delay of any reflection is within the one-shot pulse duration.

11.5. Power up

During operation $V_{CC(A)}$ must never be higher than $V_{CC(B)}$, however during power-up $V_{CC(A)} \geq V_{CC(B)}$ does not damage the device, so any power supply can be ramped up first. There is no special power-up sequencing required. The EXS0104 includes circuitry that disables all output ports when either $V_{CC(A)}$ or $V_{CC(B)}$ is switched off.

11.6. Enable and disable

An output enable input (OE) is used to disable the device. Setting OE to LOW causes all I/Os to assume the high-impedance OFF-state. The disable time (t_{dis} with no external load) indicates the delay between when OE goes LOW and when outputs actually become disabled. The enable time (t_{en}) indicates the amount of time the user must allow for one one-shot circuitry to become operational after OE is taken HIGH. To ensure the high-impedance OFF-state during power-up or power-down, pin OE should be tied to GND through a pull-down resistor, the minimum value of the resistor is determined by the current-sourcing capability of the driver.

11.7. Pull-up or pull-down resistors on I/O lines

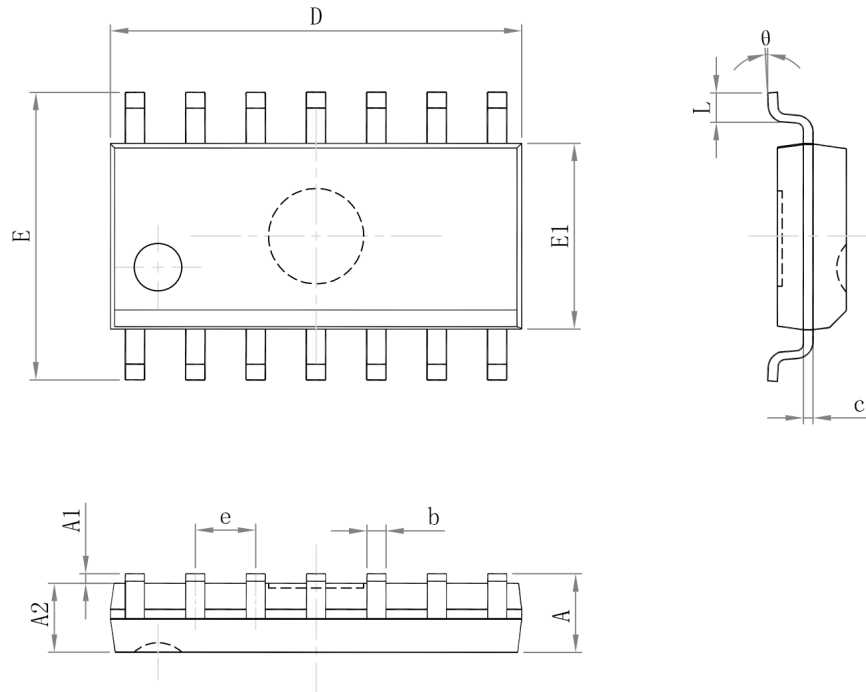
Each A port I/O has an internal 10 k Ω pull-up resistor to $V_{CC(A)}$, and each B port I/O has an internal 10 k Ω pull-up resistor to $V_{CC(B)}$. If a smaller value of pull-up resistor is required, an external resistor must be added parallel to the internal 10 k Ω , this will effect the V_{OL} level. When OE goes LOW the internal pull-ups of the EXS0104 are disabled.

EXS0104

Dual supply translating transceiver; open drain; auto direction sensing

12. Package Outline

SOP-14L

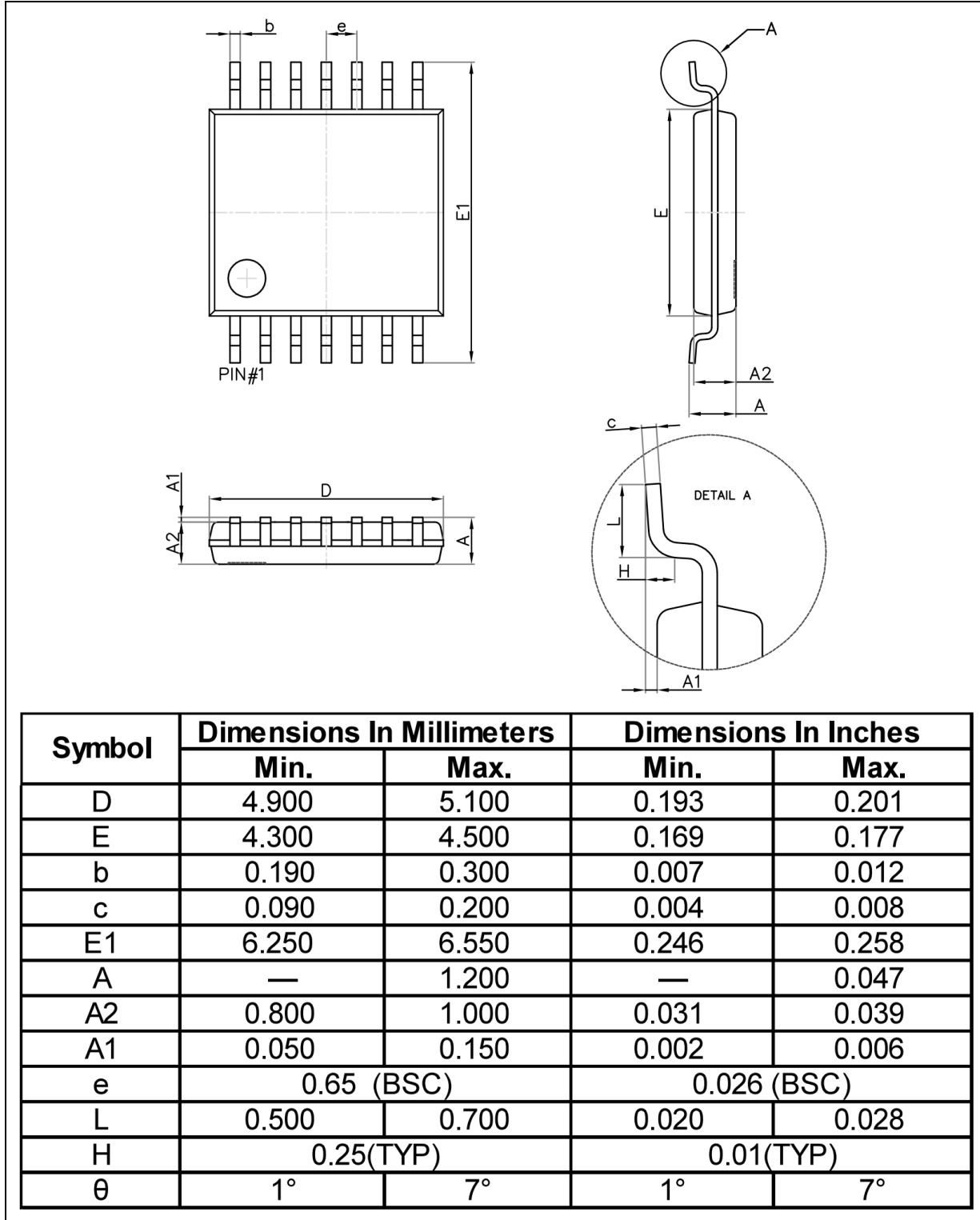


Symbol	Dimensions In Millimeters		Dimensions In Inches	
	Min	Max	Min	Max
A	--	1.750	--	0.069
A1	0.100	0.250	0.004	0.010
A2	1.250	--	0.049	--
b	0.310	0.510	0.012	0.020
c	0.100	0.250	0.004	0.010
D	8.450	8.850	0.333	0.348
E	5.800	6.200	0.228	0.244
E1	3.800	4.000	0.150	0.157
e	1.270(BSC)		0.050(BSC)	
L	0.400	1.270	0.016	0.050
theta	0°	8°	0°	8°

EXS0104

Dual supply translating transceiver; open drain; auto direction sensing

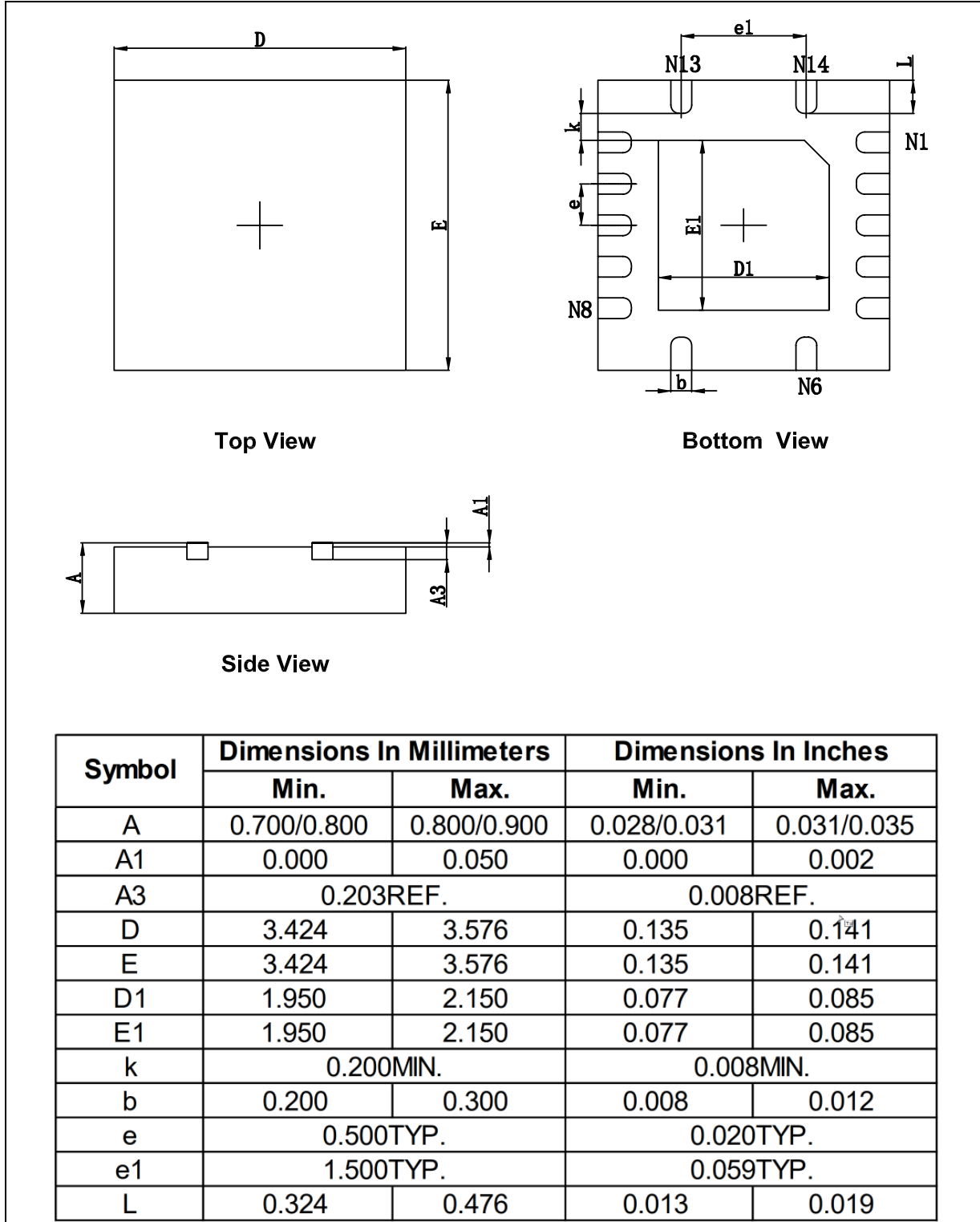
TSSOP-14L



EXS0104

Dual supply translating transceiver; open drain; auto direction sensing

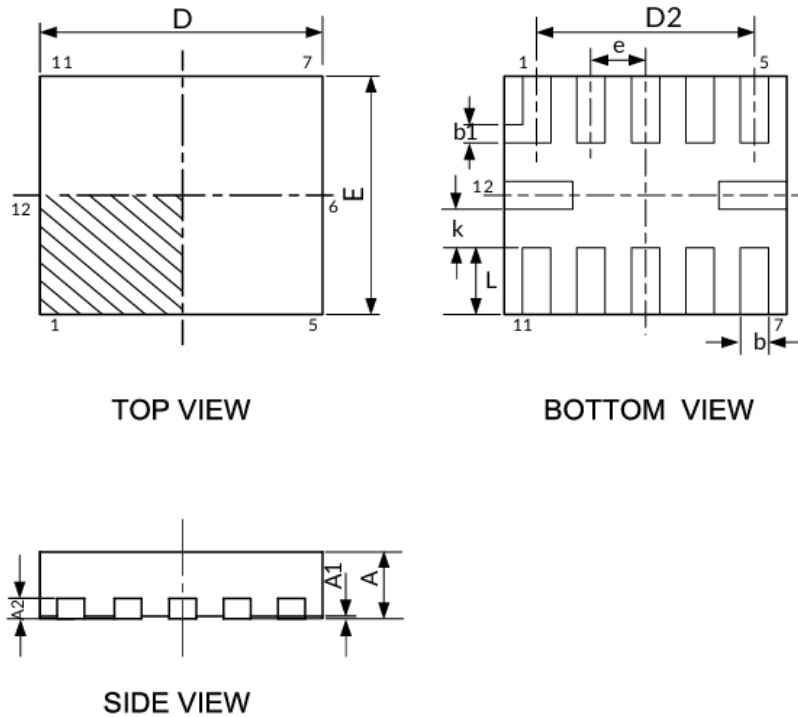
QFN3.5x3.5-14L



EXS0104

Dual supply translating transceiver; open drain; auto direction sensing

QFN1.7x2-12L



Symbol	Dimensions In Millimeters		Dimensions In Inches	
	Min	Max	Min	Max
A	0.450	0.550	0.018	0.022
A1	0.000	0.050	0.000	0.002
A2	0.152 REF		0.006 REF	
D	1.900	2.100	0.075	0.083
E	1.600	1.800	0.063	0.071
D2	1.500	1.700	0.059	0.067
b	0.150	0.250	0.006	0.010
b1	0.150 REF		0.006 REF	
k	0.250 REF		0.010 REF	
e	0.400		0.016	
L	0.400	0.600	0.016	0.024

13. Tape and Reel Information

13.1. Carrier tape dimensions

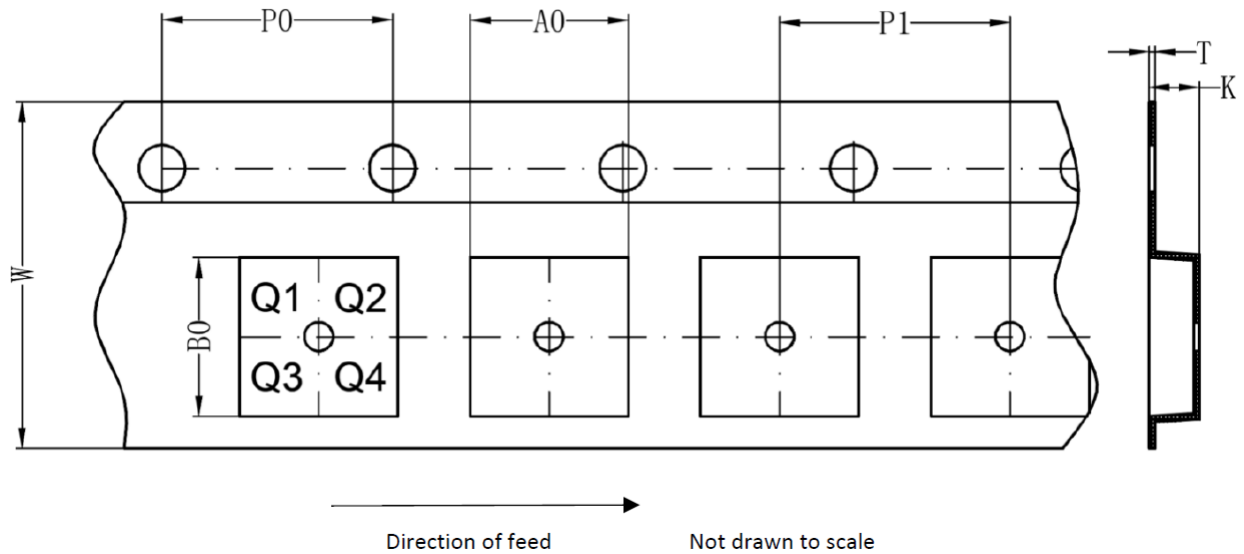


Table 13. Carrier tape dimensions

Package version	A0(mm)	B0(mm)	K(mm)	T(mm)	P1(mm)	W(mm)	P0(mm)	PIN 1
SOP-14L	6.35	9.1	1.9	0.22	8	16	4	Q1
TSSOP-14L	6.7	5.45	1.6	0.25	8	12	4	Q1
QFN3.5x3.5-14L	3.8	3.8	1.1	0.25	8	12	4	Q1
QFN1.7x2-12L	1.9	2.3	0.95	0.2	4	8	4	Q1

EXS0104

Dual supply translating transceiver; open drain; auto direction sensing

13.2. Reel and box dimensions

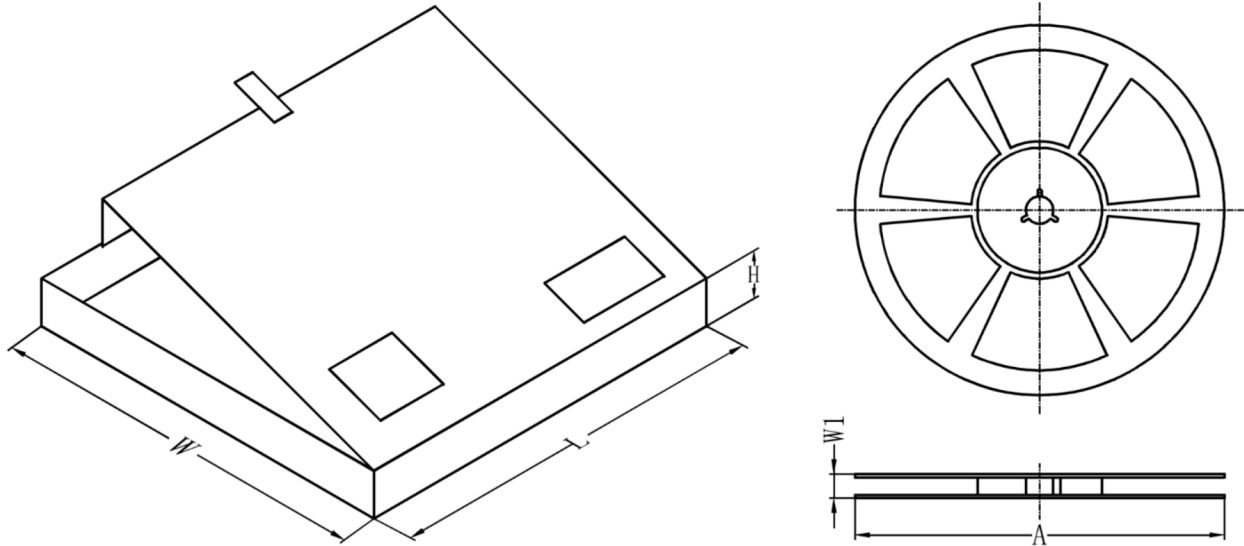


Table 14. Dimensions and quantities

Package version	Type NO.ending	Reel Dimension A(mm)	ReelWidth W1(mm)	SPQ (pcs)	Reels per box	Outer box dimensions LxWxH(mm)
SOP-14L	D	330	22.4	3000	1	358x340x50
TSSOP-14L	PW	330	18.4	3000	1	358x340x50
QFN3.5x3.5-14L	RGY	330	18.4	3000	1	358x340x50
QFN1.7x2-12L	RSA	180	13.2	3000	1	210x200x40

EXS0104

Dual supply translating transceiver; open drain; auto direction sensing

14. Abbreviations

Table 15. Abbreviations

Acronym	Description
CMOS	Complementary Metal-Oxide Semiconductor
DUT	Device Under Test
ESD	ElectroStatic Discharge
HBM	Human Body Model
CDM	Charged Device Model
I ² C	Inter-Integrated Circuit
PCB	Printed Circuit Board
PRR	Pulse Rate Repetition

15. Revision History

Table 16. Revision history

Document ID	Release Date	Data sheet status	Change notice	Supersedes
EXS0104 Rev. 1.1	Mar 27, 2026	Product datasheet		EXS0104 Rev. 1.0
Modifications:	<ul style="list-style-type: none"> Add type number EXS0104RSA and package information. 			
EXS0104 Rev. 1.0	Oct 09, 2025	Product datasheet		